

Residential Natural Gas Infrastructure Costs and Methane Leakage: \$25,000+ per home, 2.7%-5.2% leakage

The total methane leakage rate from California's residential natural gas infrastructure is estimated to be 4.18% (2.7 – 5.2%). Owner paid cost increases due to more expensive gas appliances and infrastructure additions are in darker blue, while "rate based" cost increases are in lighter blue.

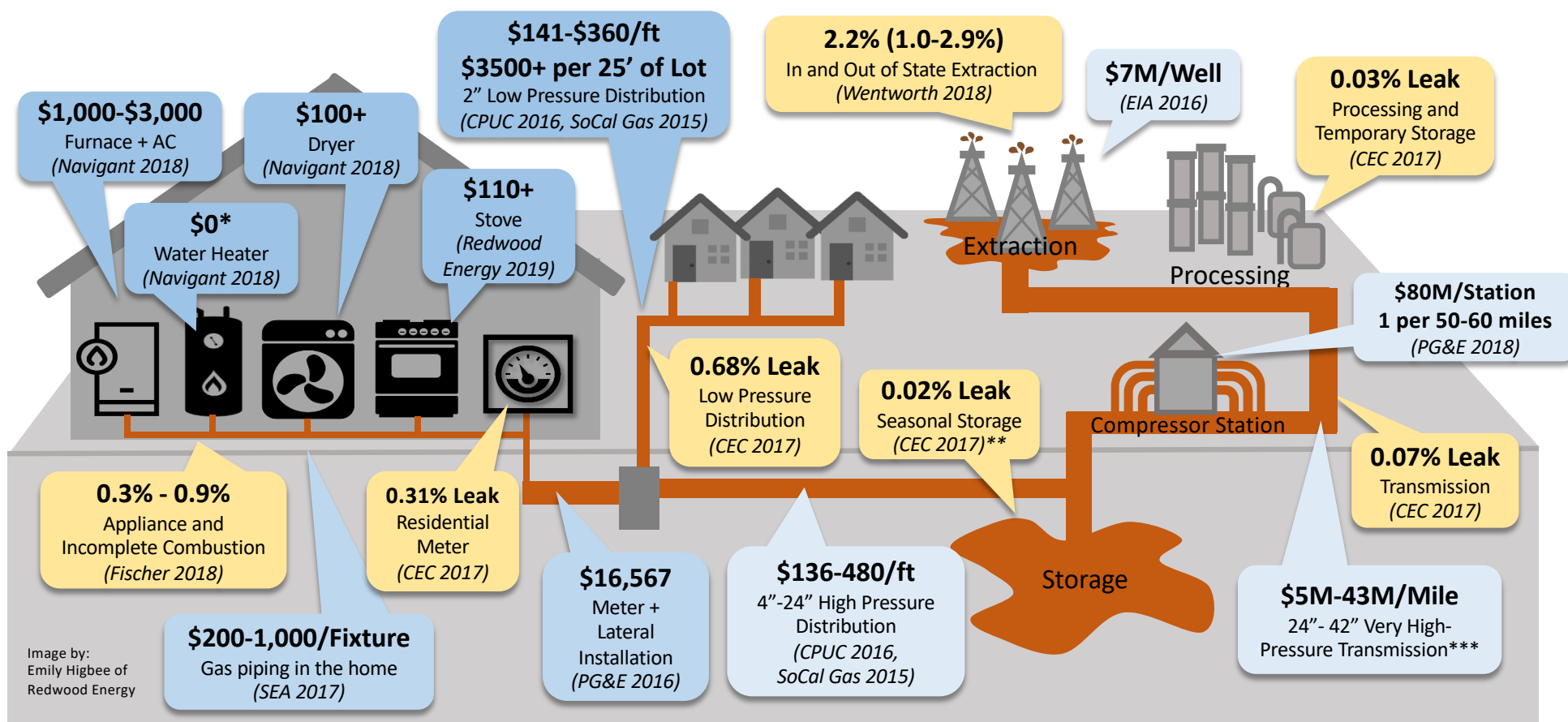


Image by:
Emily Higbee of
Redwood Energy

Appliance costs are the marginal cost (\$) of gas over all-electric

*heat pump water heater equal in cost to on demand gas water heating

**Aliso Canyon leaked 4.62 Billion cubic feet and alone cost \$1.014 billion shared by 5.6 million meters - \$181/meter cost (Reuters, Aug 6, 2018)

*** Average of various sources (Cochran 2018, Lennon 2019, SoCalGas 2014, Nemecc 2015, Noguerras 2011)